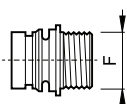


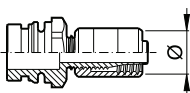
## 50 bar - 725 PSI

OTTONE - BRASS - LATON



COD.	F
463001.B20	G 1/2 (BSP)
3452010.B10	G 3/4 (BSP)

Filetto maschio  
Male thread  
Rosca macho



COD.	Ø
006722	10 x 19
006752	19 x 32

Giunto autobloccante  
Self-locking joint  
Junta autobloccante



COD.
3452010.A00

Tappo  
Plug  
Tapón

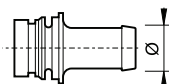


Forchetta supplementare  
Supplementary fork  
Horquilla suplementaria

COD.
010002

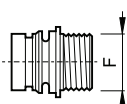
## 20 bar - 290 PSI

NYLON



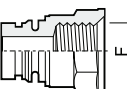
COD.	Ø
463001.A10	10 mm
463001.A13	13 mm
463001.A16	16 mm
463001.A19	19 mm
463001.A25M	25 mm

Attacco per portagomma  
Connection for hose fitting  
Conexión para portamanguera



COD.	F
463001.B70	G 3/4 (BSP)

Filetto maschio  
Male thread  
Rosca macho



COD.	F
463001.B75	G 3/4 (BSP)

Filetto femmina  
Female thread  
Rosca hembra

Tutti i raccordi sono completi di O'ring in VITON®  
All fittings are provided with VITON® O'ring